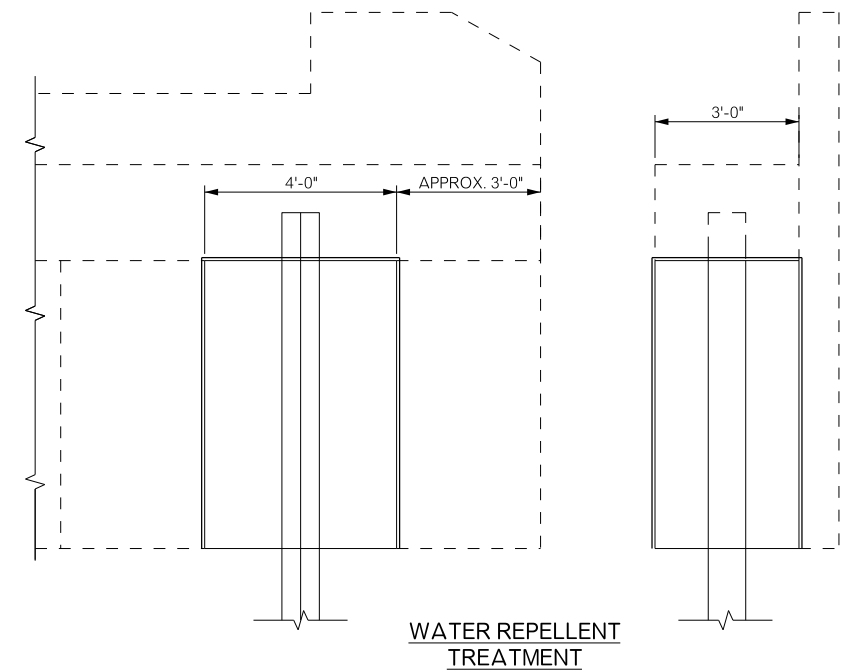
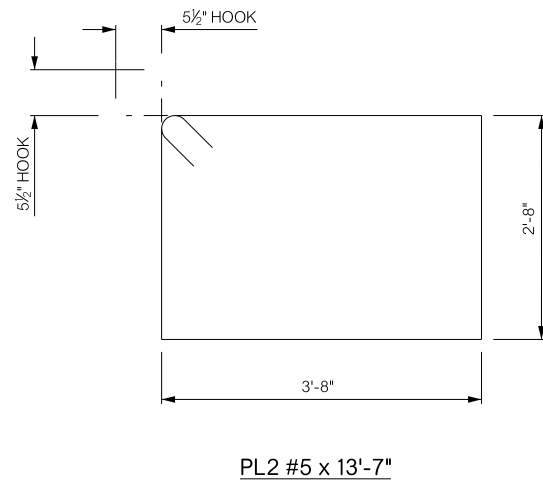
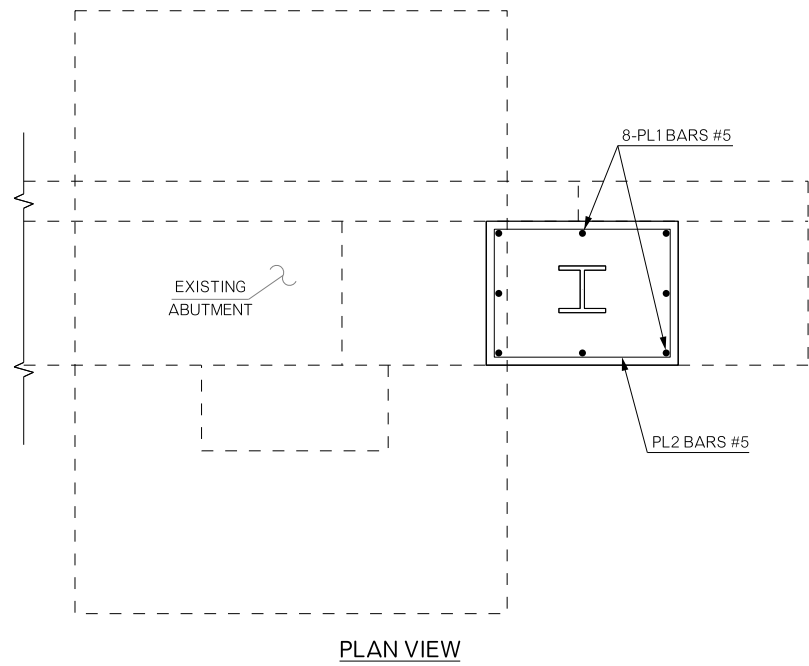


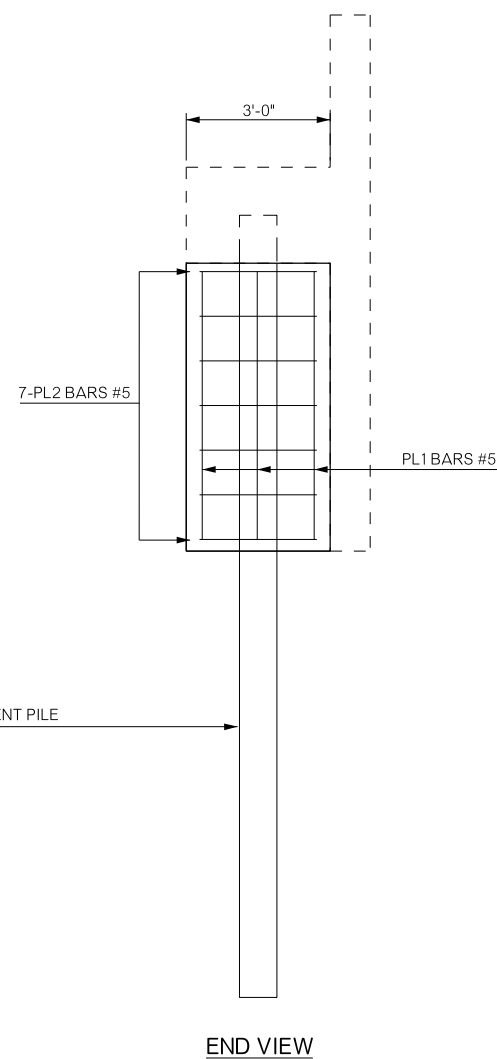
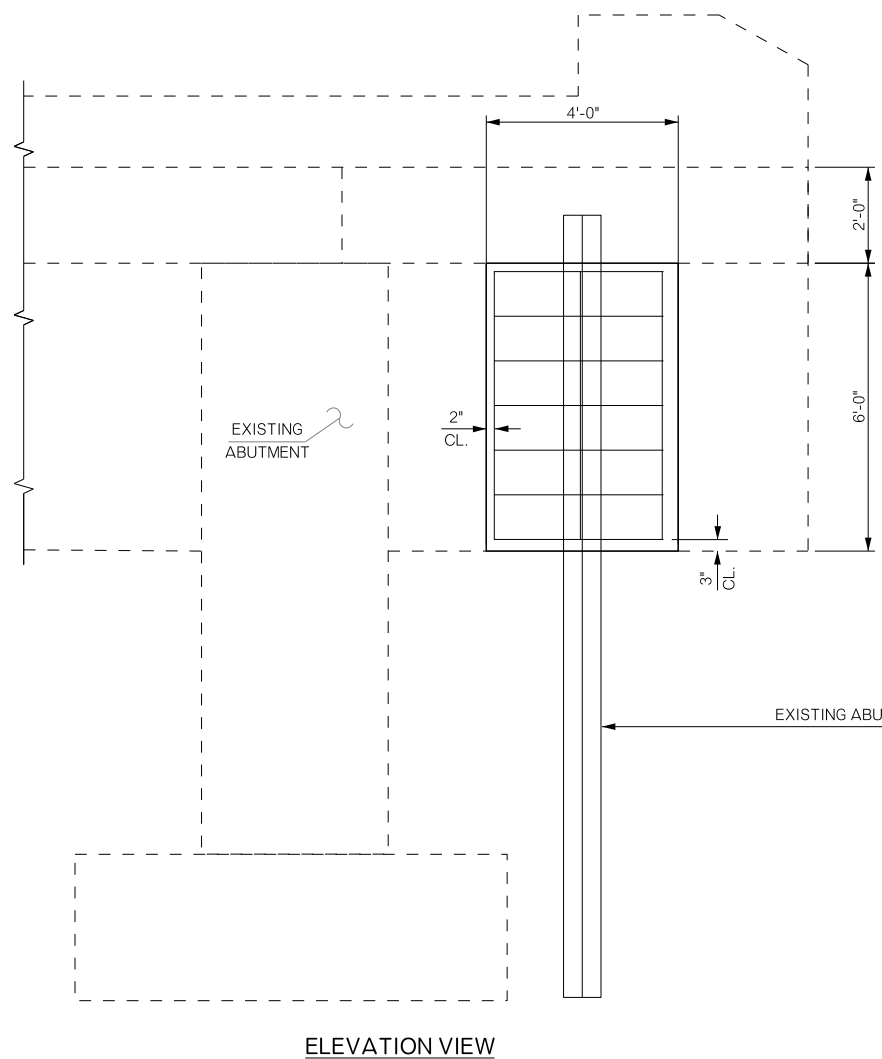
REVISIONS		
REV. NO.	DESCRIPTION	DATE



NOTE: A WATER REPELLENT TREATMENT SHALL BE APPLIED TO ALL NEW CONCRETE SURFACES OUTLINED IN HEAVY LINE. ALL EXPOSED SIDES OF THE NEW PILE ENCASEMENTS SHALL BE TREATED.

ALL CONCRETE COVER OVER REINFORCING SHALL BE 2" UNLESS OTHERWISE NOTED.

ALL EDGES OF THE NEW CONCRETE FOR PILE ENCASEMENT SHALL HAVE A 1/2" CHAMFER.



PILE BAR LIST ONE SHOWN (THREE REQUIRED)				
MARK	NO.	SIZE	FORM	LENGTH
EPOXY COATED				
PL1	8	#5	STR.	5'-7"
PL2	7	#5	BNT.	13'-7"

PIER QUANTITIES ONE SHOWN (THREE REQUIRED)		
ITEM	UNIT	TOTAL
CLASS A CONCRETE	C.Y.	2.70
EPOXY COATED REINFORCING STEEL	LB.	150.00
WATER REPELLENT (VISUALLY INSPECTED)	S.Y.	7.00
CORROSION INHIBITOR (SURFACE APPLIED)	S.Y.	4.00

BRIDGE "A" SH-91 OVER SAND CREEK	BRYAN COUNTY	Design	N/A	N/A
PILE ENCASEMENT DETAILS		Detail	RAH	7/17
		Check	TEE	8/17
STATE OF OKLAHOMA		Squad: HENSLEY	Engr: DEFRANCO	
DEPARTMENT OF TRANSPORTATION		Job Piece No. 32756(04)	Sheet No. B004	